

Geography

Overview of the course

Geography is an engaging and flexible course allowing you to study the relationships between human populations and their physical environments at a variety of stages from the local to the global.

You will consider your own role in relation to the key issues being studied as geography is relevant to all our lives. You will have the opportunity to engage in practical fieldwork activities, as well as class based activities. There are also occasional lecture events and guest speakers.

All exams will be assessed with reference to unseen resources and personal fieldwork.

There may be a cost involved in fieldwork.

Course Details and Assessment

Component 1: Changing Landscapes and Changing Places

20.5% of A Level - 1hour 45 minute written examination

Section A: Changing Landscapes:

Choice between two themes, either Coastal or Glaciated Landscapes.

Comprising of two structured, data response questions and one extended response question

Section B: Changing Places:

Landscape Systems, Processes and Change.

Comprising of two structured, data response questions and one extended response question



Component 2: Global Systems and Global Governance

27.5% of A Level - 2 hour written examination

Section A: Global Systems

Water and Carbon Cycles: two structured, data response questions and one extended response question

Section B: Global Governance: Change and Challenges

Processes and patterns of global migration and global governance of the Earth's oceans: two structured, data response questions and one extended response question

Section C: 21st Century Challenges

One extended response question drawing on both Components 1 and 2 with resource material

Component 3: Contemporary Themes in Geography

32% of A Level - 2hours 15 minute written examination

Section A: Tectonic Hazards

One extended response question

Section B: Contemporary Themes in Geography

Four optional themes:

- Ecosystems
- Economic Growth and Challenge: India or China or Development in an African Context
- Energy Challenges and Dilemmas
- Weather and Climate

Two essay questions chosen from these four optional themes

Component 4: Independent Investigation

20% of A Level - Non-exam assessment: 3000 to 4000 words

One written independent investigation, based on the collection of both field data and secondary information



Background Requirements

5 GCSEs at grade 4 or above including Mathematics and English. You will need a GCSE grade 5 or above in Geography.

Candidates who have not studied Geography at GCSE will be considered.

Students should be well motivated and have a genuine interest in the subject.

Skills Gained

Key skills are very much an integral part of the Geography A level course.

They include communications skills, team work, self-management, powers of analysis, literacy, problem posing and solving, computer literacy and spatial awareness.

Future Career Prospects

Geography is a subject with one of the highest rates of graduate employment, highly valued by employers for its combination of knowledge with competence in the key skills.

Geographers find work in travel and tourism, teaching, landscape, business planning and research and a variety of environmental roles.

For More Information

Students interested in following the A Level Geography course should contact the Head of Faculty or any subject staff.

Head of Faculty

Mr D Parkin BA (Hons) P.G.C.E

Head of Curriculum

Ms A Young BSc (Hons) P.G.C.E

Subject Staff:

Ms A Young BSc (Hons) P.G.C.E

Mr M Hughes BSc (Hons) P.G.C.E.

Syllabus

A110QS A Level

B110QS AS Level

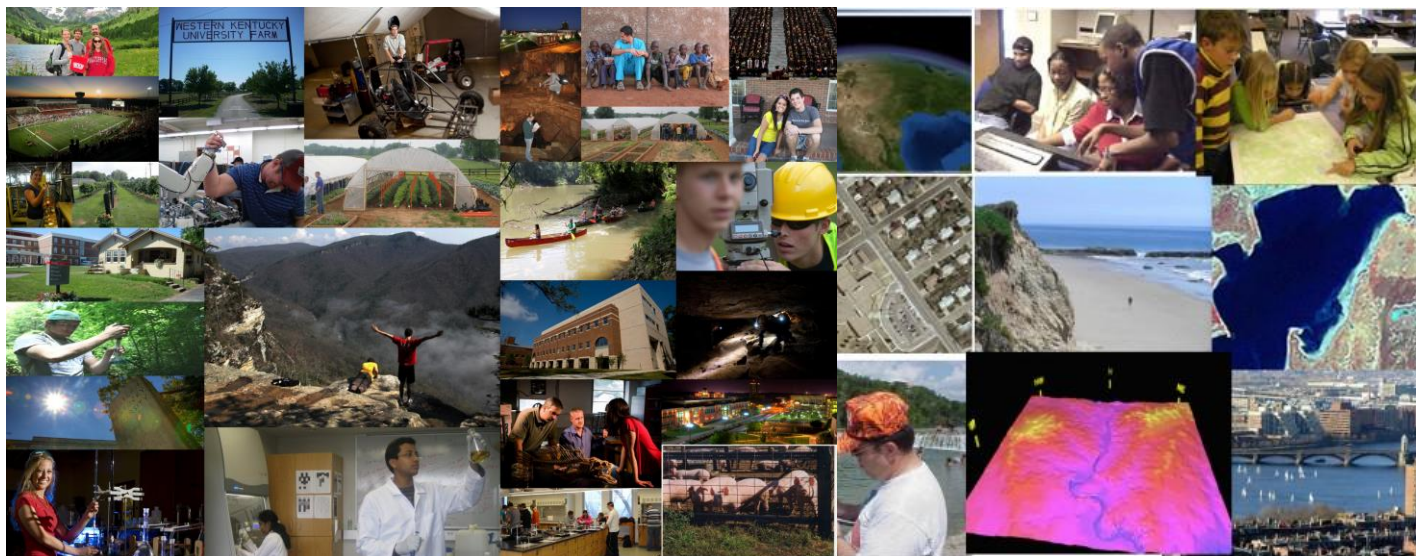
Exam Board

WJEC Eduqas

Website

Further details of this course can be found on the exam boards' website.

<https://www.eduqas.co.uk/qualifications/geograp>



Capenhurst Lane, Whitby, Ellesmere Port, Cheshire, CH65 7AQ
Tel: 0151 355 2373

Email: admin@epchs.co.uk www.epchs.co.uk
Headteacher: Mrs C. Vile B.Ed. Hons NPQH NPQEL

In the Trusteeship of the R.C. Diocese of Shrewsbury and in partnership with our partner primary schools
Our Lady Star of the Sea, St Bernard, St Mary of the Angels and St Saviour, serving the pastoral area of Ellesmere Port

