

Catch Up / Intervention Policy

Ellesmere Port Catholic High School



Approved by:	Mrs C Vile, Headteacher
Lead of Review:	Mrs J Grist, SENCO
Last reviewed on:	July 2024
Next review due by:	July 2025

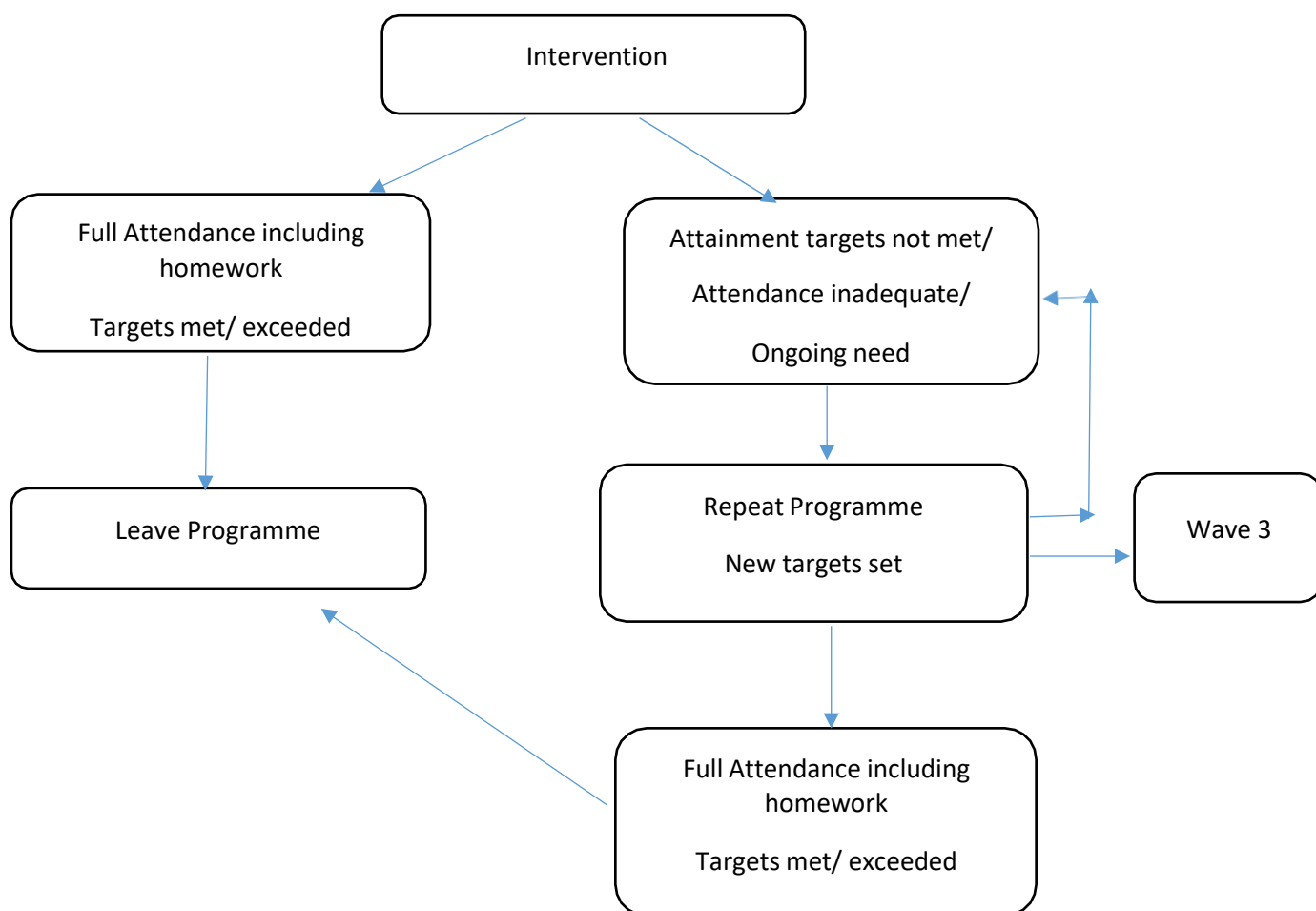
Catholic Social Teaching



The Dignity of Work and Education

Through our Catch up and intervention Policy, we are ensuring that every pupil has the chance to achieve to their full potential, and to ensure that all pupils have access to high-quality education, no matter their background or ability level. This policy ensures there is a robust strategy in place that ensures parents and students understand the entitlement to support and that the dignity of the student is paramount.

Aims
<p>To describe the structure which identifies and enables gaps in learning from KS2 to be identified and targeted.</p> <p>To ensure that staff understand the structure whereby pupils are allocated to appropriate, targeted interventions.</p>
Objectives
<p>To ensure that a consistent approach is adopted.</p> <p>To establish a clear process by which intervention will take place and how it will be evaluated/recorded.</p>
Types of Intervention
<p>Wave 2 - Small Group Catch Up intervention for Year 7-11 pupils provided by literacy team and LSAs.</p> <p>Year 7-9: toe by toe, reading buddies, Lexia, phonics, dyslexia lessons,</p> <p>Year 10-11: Lexia, reading buddies, dyslexia lessons</p> <p>Wave 3 – One to one intervention for those students identified as having specific learning needs.</p> <p>Small group intervention for year 7, 8 and 9 pupils provided by a dyslexia specialist teacher for phonic and spelling catch-up.</p>
Outline
<p>All year 7-11 students, and identified KS5 students, are assessed via accelerated reader 4 times a year. Those students are more than 6 months below their reading age are allocated to a specific intervention depending on their age and the significance of their reading age to chronological age deficit.</p>



Criteria for Selection
Any pupil whose reading age is more than 6 months below their chronological age will be placed in a reading intervention
Wave 3 – Any pupils identified as having dyslexic tendencies or pupils who have been through the wave 2 intervention and require more precision teaching.
Requests for Intervention Support
Wave 2 – Referrals for additional literacy screening can be made to the SENCO.
Wave 3 – Referrals are made either following dyslexia screening or from the Wave 2 intervention staff.

Monitoring
Attendance of students in intervention will be monitored and recorded. Students will repeat the star reading test in Autumn 2, Spring 2 and Summer 2. Parents will be informed of their child's reading age and if intervention is necessary. Students will be come out of intervention when their reading age is within 6 months of their chronological age. The AHT for QA will meet termly with the literacy team.
Assessment
Students will repeat the star reader test Autumn 2, Spring 2 and Summer 2. Staff and parents will be informed of student's reading ages.