



Set Vision for Careers 2023-2026

Vision Statement: Ensuring students have opportunities to ensure all students have opportunities to experience Careers and enrichment activities both in and beyond the classroom.

Highlight Priority Benchmarks

GB1	GB2	GB3	GB4	GB5	GB6	GB7	GB8
-----	-----	-----	-----	-----	-----	-----	-----

Set Strategic Objectives 2020-2023

Strategic Objective 1:

Through significant range of meaningful employer, further or higher educational encounters students will be aware of the opportunities available to them when they leave EPCHS.

Strategic Objective 2:

To fully embed our career academic curriculum links, throughout all areas of the school, so that staff can effectively sign post LMI and (employability) skills to individual students to support their post 16 and beyond plans.

Strategic Objective 3:

To develop and embed school wide processes to ensure curriculum teams are working cohesively and are confident in providing, supporting and signposting all learner to access appropriate opportunities to raise their career aspirations.



Learning Outcomes To deliver strategic objectives			
Strategic Objective 1: Through significant range of meaningful employer, further or higher educational encounters students will be aware of the opportunities available to them when they leave EPOCHS.			
KS	KS3	KS4	Post 16
LO	Understand how subjects are relevant to future career paths	Understand how subjects are relevant to future career paths	Understand how subjects are relevant to future career paths
LO	Recognise what your strengths and weaknesses are and how the skills you have will make you employable	Recognise what your strengths and weaknesses are and how the skills you have will make you employable	Recognise what your strengths and weaknesses are and how the skills you have will make you employable
Strategic Objective 2: To fully embed our career academic curriculum links, throughout all areas of the school, so that staff can effectively sign post LMI and (employability) skills to individual students to support their post 16 and beyond plans.			
KS	KS3	KS4	Post 16
LO	Be aware of LMI and how it can be useful to you	Be able to use LMI to help guide you in your career planning	Using LMI be able to research and evaluate to help with future career path
LO	Give examples of different types of work and what factors cause people to change jobs	Explain how work and working life is changing and how this may impact on your own and other people's career satisfaction	Discuss the personal, social, economic and environmental impacts of different kind of work and working life in the context of your own thinking about career satisfaction



LO	Know how to identify and explore options open to you	Be able to research your education, training, apprenticeship, employment and volunteering options including information on pathways through to specific goals	Be able to research and evaluate progression pathways and return on investment for the higher and further education, training, apprenticeship, employment and volunteering options open to you
<p>Strategic Objective 3: To develop and embed school wide processes to ensure curriculum teams are working cohesively and are confident in providing, supporting and signposting all learner to access appropriate opportunities to raise their career aspirations.</p>			
KS	KS3	KS4	Post 16
LO	Understand the relevance of all subjects to future career paths	Understand the relevance of all subjects to future career paths	Understand the relevance of all subjects to future career paths
LO	Describe your strengths and preferences	Recognise how you are changing, what you have to offer and what's important to you	Assess how you are changing and be able to match your skills, interests and values to requirements and opportunities in learning and work



KS3										
	Learning Outcomes	Link to Strategic Objective	How will this be delivered	BM2	BM3	BM4	BM5	BM6	BM7	BM8
LO 1	Understand the relevance of all subjects to future career paths	1 3	Year 7/8/9 focus on how all subjects link to future career paths within NCW 2024	x		x				x
LO 2	Recognise that the qualities and skills you have demonstrated both in and out of school that will make you employable	1	Year 7/8 will work on what their strengths are and how to develop transferable skills	x		x				x
LO 3	Be aware of LMI and how it can be useful to you	2	Year 9 will work on local LMI to help them make choices to help their future care path	x			x	x		
LO 4	Give examples of different kind of work and why people's satisfaction with their working life can change	2 3	Employers support students to develop ideas around different career paths	x		x	x			
LO 5	Know how to identify and systematically explore options open to you at a decision point	2	Year 9 Options Process – All students talks with a member of SLT including all routes and parental engagement	x				x	x	x



KS4										
	Learning Outcomes	Link to Strategic Objective	How will this be delivered	BM2	BM3	BM4	BM5	BM6	BM7	BM8
LO 1	Understand the relevance of all subjects to future career paths	1 3	Year 10/11 focus on how all subjects link to future career paths within NCW 2024	x		x				x
LO 2	Show how you are developing the skills and qualities which will help you to improve your employability	1	Year 10 Work Experience	x		x	x			x
LO 3	Explain how work and working life is changing and how this may impact on your own and other people's career satisfaction	1	Year 10 Careers Fair	x		x	x			
LO 4	Recognise how you are changing, what you have to offer and what's important to you	1	Year 11 Mock Interview Event with CV feedback from employers	x		x		x		x



KS5										
	Learning Outcomes	Link to Strategic Objective	How will this be delivered	BM2	BM3	BM4	BM5	BM6	BM7	BM8
LO 1	Understand the relevance of all subjects to future career paths	1 3	Year 12/13 focus on how all subjects link to future career paths within NCW 2024	x		x				x
LO 2	Explain how you are developing your employability qualities and skills to satisfy your own expectations and the future expectations of your employers and co-workers	1	Year 12 Work Experience	x		x	x			x
LO 3	Be able to draw conclusions from researching and evaluating relevant LMI to support your future plans	1 2	Year 12 Next Steps Workshops and employer/Post 18 options networking event	x		x		x		x
LO 4	Be able to research and evaluate progression pathways and return on investment for the higher and further education, training, apprenticeship, employment and volunteering options open to you	1 3	Year 12 Assessment Centre Event with CV/Allplication feedback from employers HE Visit	x		x		x	x	



LO 5	Assess how you are changing and be able to match your skills, interests and values to requirements and opportunities in learning and work	1 3	Year 13 Assessment Centre Event with CV/Application feedback from employers	x		x				x
------	---	-----	---	---	--	---	--	--	--	---

Careers in
Context



Careers Programme Overview (2023-24) Ellesmere Port Catholic High School

THE CAREERS & ENTERPRISE COMPANY

Vision Statement

Ensuring students have opportunities to ensure all students have opportunities to experience Careers and enrichment activities both in and beyond the classroom.

Contact: Mr Holt
Email: t.holt@epchs.co.uk
Telephone: 0151 355 2373

Milestones and Learning Outcomes

Year 11

Recognise how you are changing, what you have to offer and what's important to you

Year 10

Show how you are developing the skills and qualities which will help you to improve your employability

Year 9

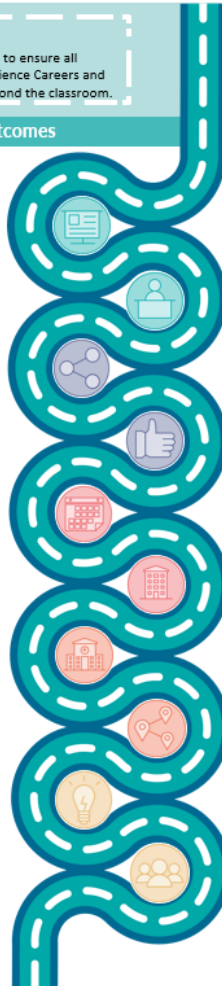
Know how to identify and systematically explore options open to you at a decision point

Year 8

Be aware of LMI and how it can be useful to you

Year 7

Understand the relevance of all subjects to future career paths



Key Events and Experiences

Year 11

Next Steps Assembly - Application process & skill development

Mock Interview Day

Year 10

Careers & Education Fair

Work Experience

Year 9

Cheshire College South & West

Options Evening

Brownlow Furniture

Year 8

Cheshire Police

Wirral Met

Year 7

Royal Navy

NHS

Cheshire College South & West

Inspiring and preparing young people for the world of work.

Careers in Context



Careers Programme Overview Academic Year Name of School



Vision Statement

Ensuring students have opportunities to ensure all students have opportunities to experience Careers and enrichment activities both in and beyond classroom

Contact: Mr Holt

Email: t.holt@epchs.co.uk

Telephone: 0151 355 2373

Milestones and Learning Outcomes

Key Events and Experiences

Year 12

Explain how you are developing your employability qualities and skills to satisfy your own expectations and the future expectations of your employers and co-workers

Year 12

Employment Readiness Programme
Apprenticeship & Jobs Fair
Mock Interview Day
University visits
Guest speakers

Year 13

Be able to research and evaluate progression pathways and return on investment for the higher and further education, training, apprenticeship, employment and volunteering options open to you

Year 13

Employment Readiness Programme
Apprenticeship & Jobs Fair
Mock Interview Day
Guest speakers

Inspiring and preparing young people for the world of work.

Careers in Context