

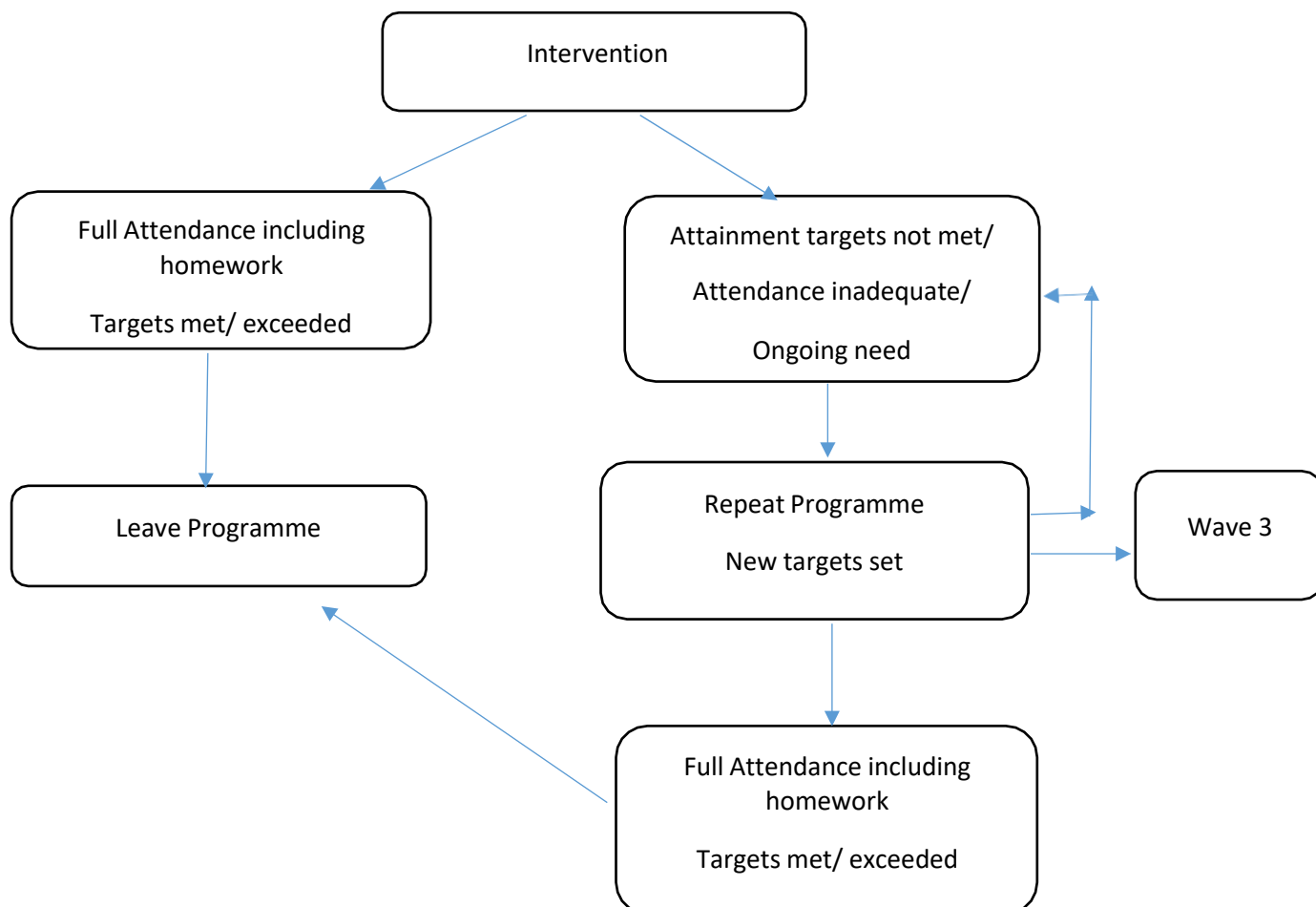
# Catch Up / Intervention Policy

## Ellesmere Port Catholic High School



<b>Approved by:</b>	<b>Mrs C Vile, Headteacher</b>
<b>Lead of Review:</b>	<b>Mrs V Marsland, SENCO</b>
<b>Last reviewed on:</b>	<b>July 2023</b>
<b>Next review due by:</b>	<b>July 2024</b>

<b>Aims</b>
<p>To describe the structure which identifies and enables gaps in learning from KS1 and 2 to be identified and targeted.</p> <p>To ensure that staff understand the structure whereby pupils are allocated to appropriate, targeted interventions.</p>
<b>Objectives</b>
<p>To ensure that a consistent approach is adopted.</p> <p>To establish a clear process by which intervention will take place and how it will be evaluated/recorded.</p>
<b>Types of Intervention</b>
<p>Wave 2 - Small Group Catch Up intervention for Year 7-11 pupils provided by literacy team and LSAs.</p> <p>Year 7-9: toe by toe, reading buddies, phonics, dyslexia lessons</p> <p>Year 10-11: Lexia, reading buddies, dyslexia lessons</p> <p>Wave 3 – One to one intervention for those students identified as having specific learning needs.</p> <p>Small group intervention for year 7, 8 and 9 pupils provided by a dyslexia specialist teacher for phonic and spelling catch-up.</p>
<b>Outline</b>
<p>All year 7-11 students, and identified KS5 students, are assessed via accelerated reader 4 times a year. Those students are more than 6 months below their reading age are allocated to a specific intervention depending on their age and the significance of their reading age to chronological age deficit.</p>



<b>Criteria for Selection</b>
<p>Any pupil whose reading age is more than 6 months below their chronological age will be placed in a reading intervention</p> <p>Wave 3 – Any pupils identified as having dyslexic tendencies or pupils who have been through the wave 2 intervention and require more precision teaching.</p>
<b>Requests for Intervention Support</b>
<p>Wave 2 – Referrals for additional literacy screening can be made to the SENCO.</p> <p>Wave 3 – Referrals are made either following dyslexia screening or from the Wave 2 intervention staff.</p>

<b>Monitoring</b>
<p>Attendance of students in intervention will be monitored and recorded. Students will repeat the star reading test in Autumn 2, Spring 2 and Summer 2. Parents will be informed of their child's reading age and if intervention is necessary. Students will be come out of intervention when their reading age is within 6 months of their chronological age. The AHT for QA will meet termly with the literacy team.</p>
<b>Assessment</b>
<p>Students will repeat the star reader test Autumn 2, Spring 2 and Summer 2. Staff and parents will be informed of student's reading ages.</p>