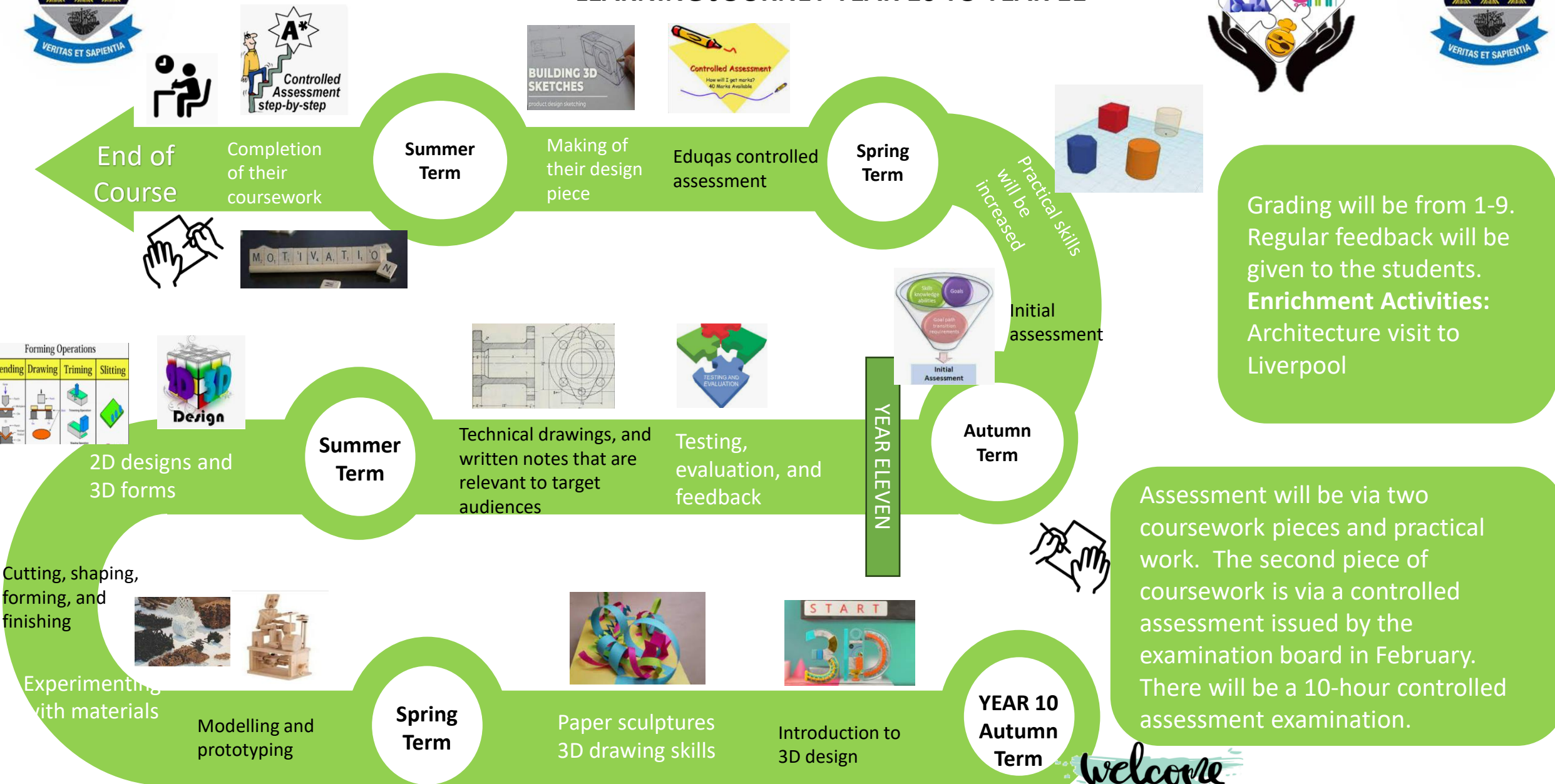


# EPCHS 3D DESIGN DEPARTMENT:

## LEARNING JOURNEY YEAR 10 TO YEAR 11



Grading will be from 1-9. Regular feedback will be given to the students.  
**Enrichment Activities:**  
 Architecture visit to Liverpool

Assessment will be via two coursework pieces and practical work. The second piece of coursework is via a controlled assessment issued by the examination board in February. There will be a 10-hour controlled assessment examination.

