

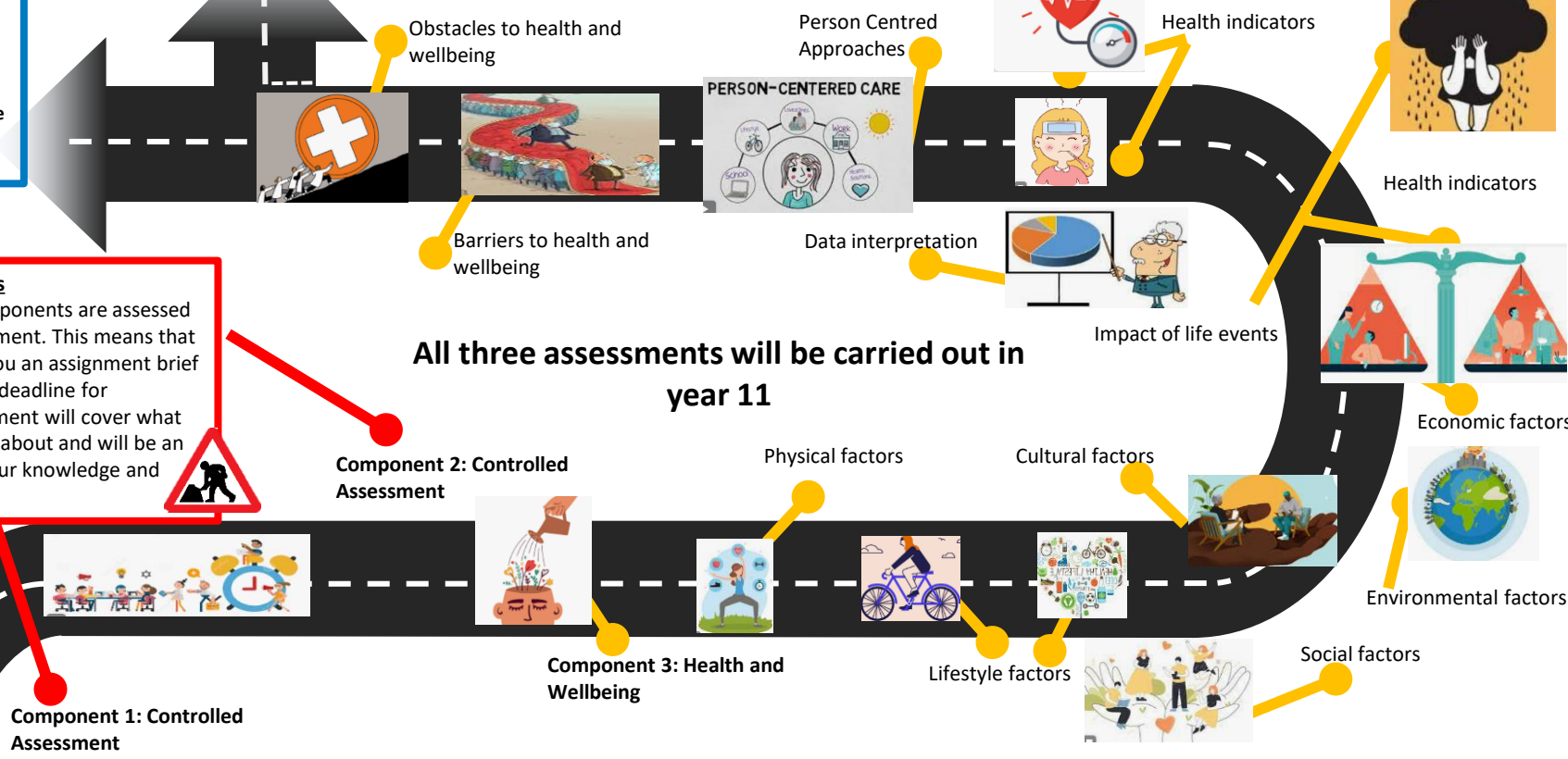


**STOP** Continuing with your studies in the Sixth Form doing Level 3 Extended Certificate in Health and Social Care

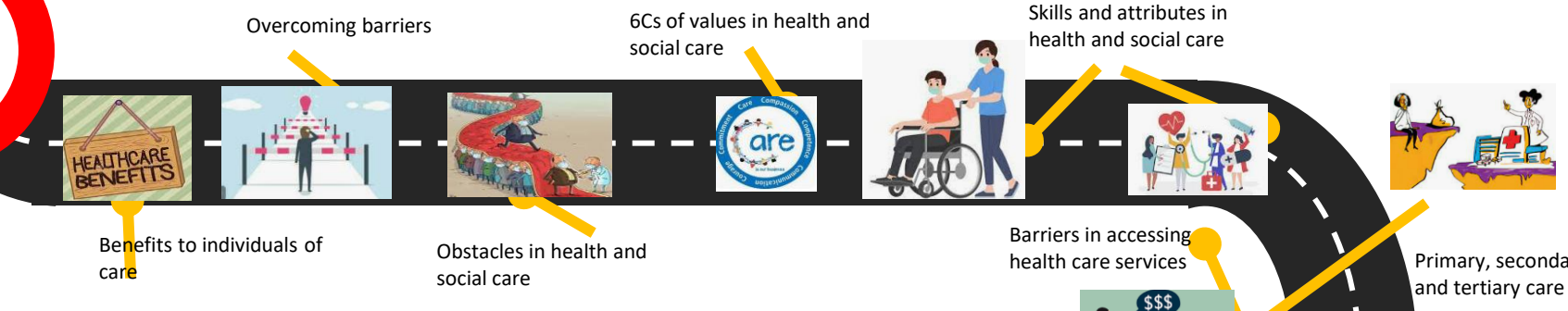
You may wish to go to college and study Level 3 Health and Social Care. Alternatively you may wish to do an apprenticeship in the health and social care sector.

**Controlled Assessments**  
The two controlled components are assessed through internal assessment. This means that your teacher will give you an assignment brief and indicate to you the deadline for completion. The assignment will cover what you have been learning about and will be an opportunity to apply your knowledge and skills.

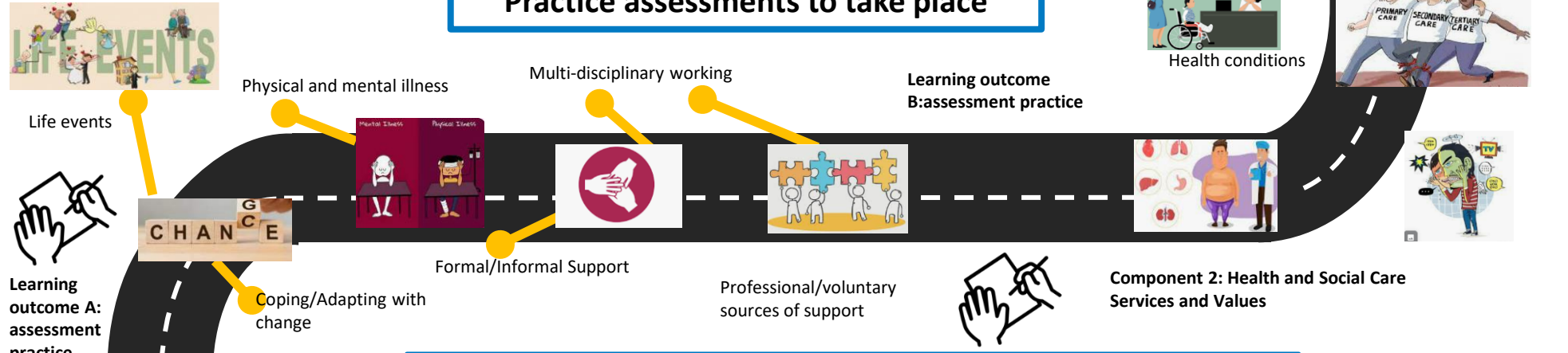
**All three assessments will be carried out in year 11**



**YEAR 11**



**Practice assessments to take place**



**Year 10 will be knowledge and content based work**

