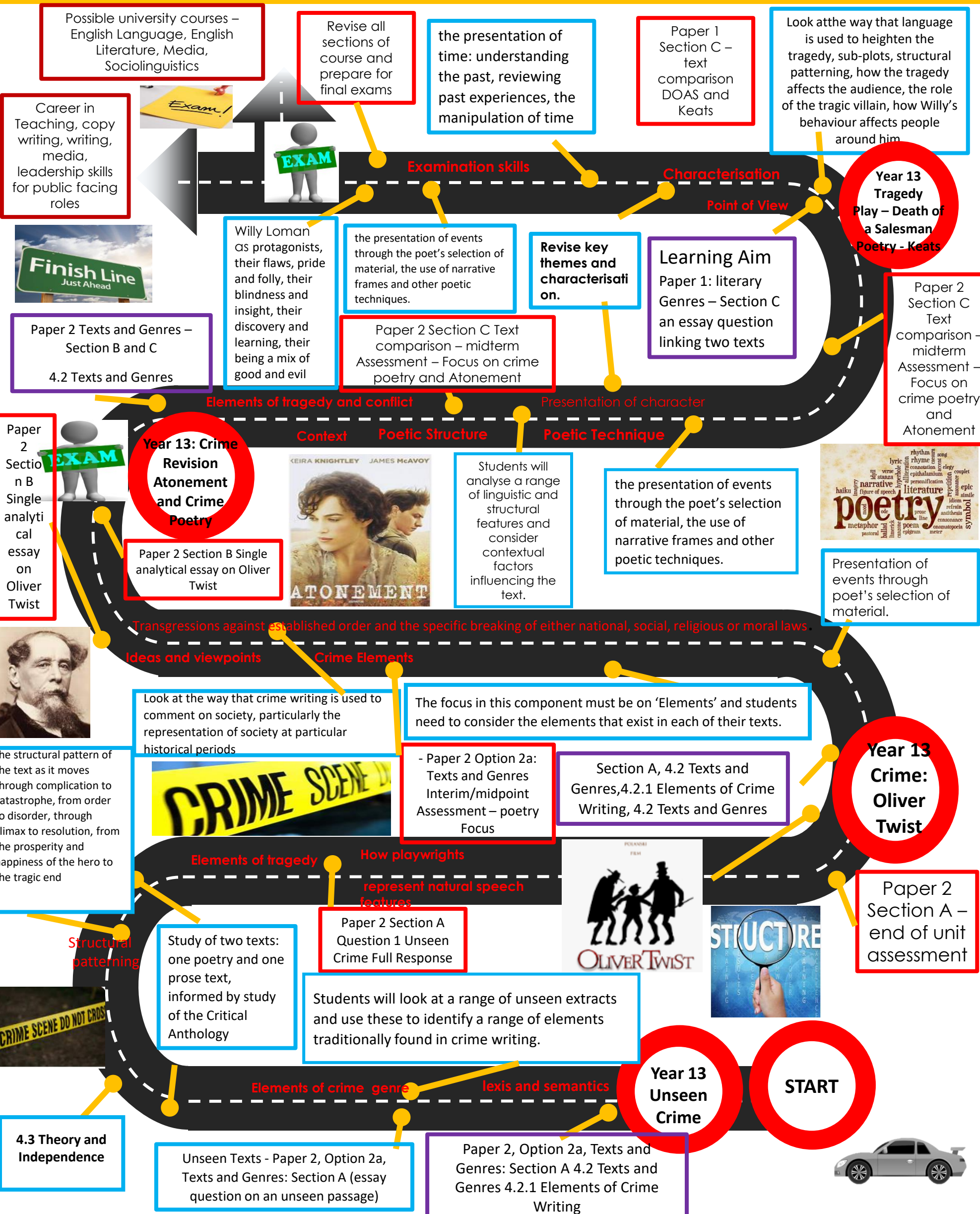


LEARNING JOURNEY ELLESMERE PORT CATHOLIC HIGH



Possible university courses – English Language, English Literature, Media, Sociolinguistics

Career in Teaching, copy writing, writing, media, leadership skills for public facing roles

Revise all sections of course and prepare for final exams

the presentation of time: understanding the past, reviewing past experiences, the manipulation of time

Paper 1 Section C – text comparison DOAS and Keats

Look at the way that language is used to heighten the tragedy, sub-plots, structural patterning, how the tragedy affects the audience, the role of the tragic villain, how Willy's behaviour affects people around him

Year 13 Tragedy Play – Death of a Salesman Poetry - Keats



Paper 2 Texts and Genres – Section B and C
4.2 Texts and Genres

Willy Loman as protagonists, their flaws, pride and folly, their blindness and insight, their discovery and learning, their being a mix of good and evil

the presentation of events through the poet's selection of material, the use of narrative frames and other poetic techniques.

Revise key themes and characterisation.

Learning Aim
Paper 1: literary Genres – Section C an essay question linking two texts

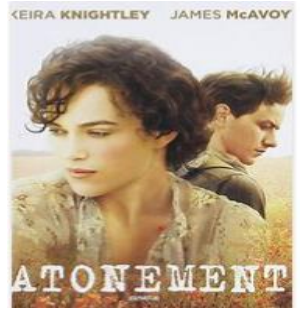
Paper 2 Section C Text comparison – midterm Assessment – Focus on crime poetry and Atonement

Paper 2 Section C Text comparison – midterm Assessment – Focus on crime poetry and Atonement

Paper 2 Section B Single analytical essay on Oliver Twist

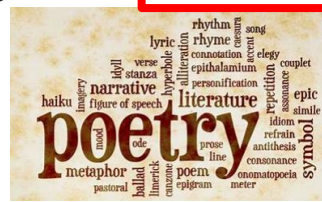
Year 13: Crime Revision Atonement and Crime Poetry

Paper 2 Section B Single analytical essay on Oliver Twist



Students will analyse a range of linguistic and structural features and consider contextual factors influencing the text.

the presentation of events through the poet's selection of material, the use of narrative frames and other poetic techniques.



Presentation of events through poet's selection of material.

Transgressions against established order and the specific breaking of either national, social, religious or moral laws.



Ideas and viewpoints

Crime Elements

Look at the way that crime writing is used to comment on society, particularly the representation of society at particular historical periods

The focus in this component must be on 'Elements' and students need to consider the elements that exist in each of their texts.



- Paper 2 Option 2a: Texts and Genres Interim/midpoint Assessment – poetry Focus

Section A, 4.2 Texts and Genres, 4.2.1 Elements of Crime Writing, 4.2 Texts and Genres

Year 13 Crime: Oliver Twist

Paper 2 Section A – end of unit assessment

Elements of tragedy

How playwrights

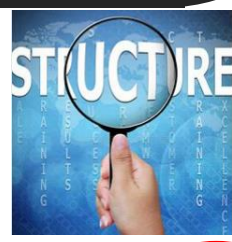
represent natural speech features

the structural pattern of the text as it moves through complication to catastrophe, from order to disorder, through climax to resolution, from the prosperity and happiness of the hero to the tragic end

Study of two texts: one poetry and one prose text, informed by study of the Critical Anthology

Paper 2 Section A Question 1 Unseen Crime Full Response

Students will look at a range of unseen extracts and use these to identify a range of elements traditionally found in crime writing.



Structural patterning



Elements of crime genre

lexis and semantics

4.3 Theory and Independence

Unseen Texts - Paper 2, Option 2a, Texts and Genres: Section A (essay question on an unseen passage)

Paper 2, Option 2a, Texts and Genres: Section A 4.2 Texts and Genres 4.2.1 Elements of Crime Writing

Year 13 Unseen Crime

START

