



# Ellesmere Port Catholic High School

Wk. 08

PARENT BULLETIN

31<sup>st</sup> October 2022

PRAYER FOR CHANGE

**GOD,  
BEFORE I GIVE ANYTHING UP OR  
CHANGE MY BEHAVIOR, HELP ME TO  
TRULY REST IN YOU AND FIND MY  
GUIDANCE THROUGH YOU. THIS IS  
TOUGH FOR ME BECAUSE WAITING ON  
YOU IS NOT HOW THE WORLD  
OPERATES. BUT IT IS HOW I WANT TO  
LIVE - BECAUSE I KNOW YOU KNOW  
WHAT IS BEST FOR ME. HELP ME TO  
TRUST THAT AND LIVE IN THAT!  
AMEN.**

SPIRITUALLYYOUNG5.COM



Do you follow to keep up to date with all that is happening at EPCHS?

Facebook - <https://www.facebook.com/EllesmerePortCatholicHighSchool/>

Twitter - @EPCH\_School



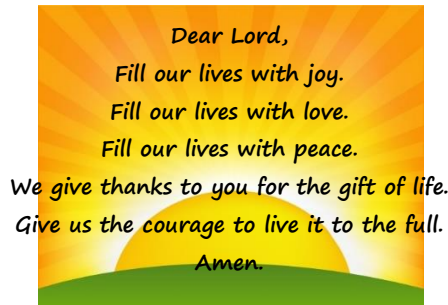
# Ellesmere Port Catholic High School

***Our Vision...***  
Excellent teaching.

***Our Vision...***  
Strong Catholic ethos.

***Our Vision...***  
Ensuring every child is known.

***Our Vision...***  
High expectations of everyone.



***Our Vision...***  
Excellent leadership at all levels.

***Our Vision...***  
Exemplary behaviour and personal standards.

***Our Vision...***  
At the heart of the community.

***Our Vision...***  
Keeping children safe in education.



## *Headteacher Message*

Dear Parents and Guardians,

Thank you for all your support this half term. We were delighted with all the positive feedback that came through Year 7's settling in evening and were pleased to hear how much our students are enjoying the extra-curricular activities.

Wishing you all a restful half term and we look forward to **welcoming our students back on Monday 31<sup>st</sup> October.**

Mrs. Vile

Do you follow to keep up to date with all that is happening at EPCHS?

Facebook - <https://www.facebook.com/EllesmerePortCatholicHighSchool/>

Twitter - @EPCH\_School



# Ellesmere Port Catholic High School

**Live Well**  
Cheshire West  
[livewell.cheshirewestandchester.gov.uk](http://livewell.cheshirewestandchester.gov.uk)

- Have your say
- Information
- Support

Dear Parents,

Please find attached PDF, link and QR code of the latest Parent Carer Forum News on their behalf.

[https://us4.campaign-archive.com/?e=\[UNIQID\]&u=bf74f2fcbe32e09324e78abd9&id=632494dbf3](https://us4.campaign-archive.com/?e=[UNIQID]&u=bf74f2fcbe32e09324e78abd9&id=632494dbf3)



## Ellesmere Port Pledge Careers & Education Fair

Dear Parent/Guardian,

We are excited to announce the Ellesmere Port Pledge Careers & Education Fair organised by The Pledge Partnership for Cheshire & Warrington on 10/11/2022 between 15:30-17:00.

We are already taking all of our Y10 students to the fair during the school day. This event is free and open to all within Ellesmere Port, including Helsby and Neston, especially those in Year 9 – Year 13 including parents/carers. The purpose of this event is to enable students to explore ideas of what subjects to study, careers to pursue, connect with businesses and understand educational pathways and opportunities.

The return to face to face events brings an excellent opportunity to talk to professionals and trainers from a wide range of sectors on a one to one basis. Parents and students are welcome to attend the fair after school between 15:30 and 17:00. If you would like to attend, please register at the link below:

<https://www.eventbrite.co.uk/e/ellesmere-port-pledge-careers-fair-public-sign-up-tickets-411306899007>

If you have questions, please contact:

Email: [james.pritchard-wood@youthfed.org](mailto:james.pritchard-wood@youthfed.org)



Flyer.pdf

**Do you follow to keep up to date with all that is happening at EPCHS?**

**Facebook** - <https://www.facebook.com/EllesmerePortCatholicHighSchool/>

**Twitter** - @EPCH\_School



Ellesmere Port Catholic High School



EPCHS kickstarted the **WayWord Literacy festival** which is taking place at the StoryHouse in Chester this week by hosting a performance of Romeo and Julliet. It was a brilliant opportunity to see a contemporary version of Shakespear's Romeo & Julliet.

#### **StoryHouse Education Manager**

*'Thank you for your warm welcome in school for Romeo and Juliet this week – the cast, crew and I had a great day and were delighted to engage with a variety of vibrant young people.'*

#### **EPCHS staff member**

*'Just wanted to say what a fantastic production this was today. I popped my head in and the students were so excited! Hats of to the whole team and to yourself for organising.'*

Do you follow to keep up to date with all that is happening at EPCHS?

Facebook - <https://www.facebook.com/EllesmerePortCatholicHighSchool/>

Twitter - @EPCH\_School



# Ellesmere Port Catholic High School



## PE Department

Massive WELL DONE to our Yr.7s on their first Netball Fixture against Abbey Gate. All girls played extremely well and represented the school fantastically. We are looking forward to our next game.

The two players of the game were: **Hannah Jervis & Isabelle Durston-Jones**



Do you follow to keep up to date with all that is happening at EPCHS?

Facebook - <https://www.facebook.com/EllesmerePortCatholicHighSchool/>

Twitter - @EPCH\_School



## **Congratulations to our U13's Football Team**

**They played against Chrisleton in their first in the cup of the season. The girls played extremely well and worked hard during the game. The girls showed great skill and enjoyment for the game.**

The two players of the game were: **Grace Luscombe and Lanaya McGinnigle**



**Do you follow to keep up to date with all that is happening at EPCHS?**

**Facebook - <https://www.facebook.com/EllesmerePortCatholicHighSchool/>**

**Twitter - @EPCH\_School**



# Ellesmere Port Catholic High School

Day / Time	Monday	Tuesday	Wednesday	Thursday	Friday
Before school	Year 7 and 8 Sensory Circuits (Gym) (CDA) 8:10 – 8:30	Year 7 and 8 Sensory Circuits (Gym) (CDA) 8:10 – 8:30	Year 7 and 8 Sensory Circuits (Gym) (CDA) 8:10 – 8:30	Year 7 and 8 Sensory Circuits (Gym) (CDA) 8:10 – 8:30	Year 7 and 8 Sensory Circuits (Gym) (CDA) 8:10 – 8:30
Lunch	Rock Band (Music Room)  KS3 and 4 Badminton (CLO)	Yr 7 Music Club (Music Room)  VOX Choir (Drama Studio)	Yr 7, 8 and 9 CAFOD Club (CSI)  Music Tech Club (Music Room)  KS4 Basketball	History Movie Club (AHU)  KS3 Basketball  Rock Band (Music Room) Drama Club (Drama Studio)	Music Club (Music Room)  KS3 and 4 Boccia (CLO)
After school 3 – 4pm	Edsential Music Hub (Music Room)  Home learning club (library) 3:00 – 3:45pm	KS4 Drama intervention (Drama Studio)  KS3 and 4 Girls Netball (CLO)  Yr 7 Football (MCA)  Yr 8 Football (THO)  STEM club (C2)  Yr 7 and 8 Rugby (PBO)  Yr 9 Football (THO)  GCSE PE intervention (CLO / GTR)  Home learning club (library) 3:00 – 3:45pm	Yr 11 Triple Physics intervention (DWO) week A only  Yr 13 Physics intervention (DWO) week B only  KS4 Music intervention (Music Room)  Home learning club (library) 3:00 – 3:45pm	Performing Arts (Main Hall) 3.00pm - 4.30pm  Girls Football (GTR)  Yr 9, 10 and 11 Rugby  KS5 PE Intervention (CLO)  Home learning club (library) 3:00 – 3:45pm	Student and staff reflection / meditation * (Chapel) 3:15 – 3:30 <i>*Only running on the first Friday of each month*</i>

Do you follow to keep up to date with all that is happening at EPCHS?

Facebook - <https://www.facebook.com/EllesmerePortCatholicHighSchool/>

Twitter - @EPCH\_School



## Ellesmere Port Catholic High School

### Ethos, Culture and Character – Mrs Marsland, Mr Jones and Mr Hughes

**Excellent Character** – Over 10,000 Achievement points were awarded to EPCHS students since the start of term which is a fantastic total. We are incredibly proud of how you have demonstrated our values, from excellence in lessons, to supporting other students and even ensuring any litter has been cleared from the yard by caring for our environment, you are shining!

The **Heroes of the Week** are showing true character, modelling the very best behaviours we expect of our students whilst at our school. Congratulations to all those who have been chosen this week and good luck to everyone who has the opportunity each week to be nominated for their positive actions.

**As a reminder to parents, download the Arbor App so you can stay connected and up to date with your child's progress in school. For further information click the link below: <https://epchs.co.uk/arbor-information-leaflet-2/>**

**Uniform Expectations** – EPCHS students show us daily how they follow our standards and expectations and quite rightly our learners have asked what earrings are permitted. As written in our uniform policy, students are allowed to wear a single, small, stud earring in each ear. These should be small enough to fit through a 'paper hole punch' and not be hooped.

Please see the images below for a guide on appropriate studs:



### UNSUITABLE EARRINGS



### SUITABLE EARRINGS





## Ellesmere Port Catholic High School

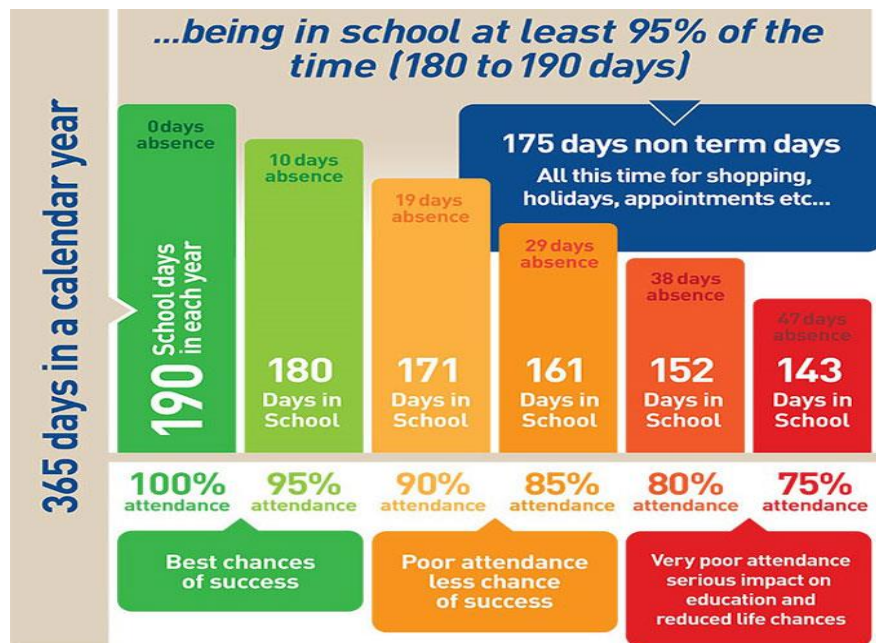
### All other piercings must not be worn to school.

All other jewellery including bracelets, necklaces, and rings must also not be brought to school. If seen these will be confiscated in the first instance and collected from your Pastoral Leader at the end of the day. Repeated failure to follow this rule will result in further behaviour sanctions being issued.

We do however encourage our students to wear a watch for school to ensure they are punctual to all events. Good time keeping is a key skill to develop and take into their future life.

**General Appearance** – A reminder to all students that all make-up, including fake-tan, lash extensions, false nails and painted nails are not permitted in school under any circumstances. If students are to wear these for events outside of school such as dance competitions, weddings or family celebrations they should be booked for the day the student finishes school and removed by the time they return.

**Attendance Matters** - Attendance and punctuality to school and lessons is paramount to successful outcomes. The graphic below clearly shows the impact being off school can have upon your child's progress.



Do you follow to keep up to date with all that is happening at EPCHS?

Facebook - <https://www.facebook.com/EllesmerePortCatholicHighSchool/>

Twitter - @EPCH\_School



## Ellesmere Port Catholic High School

At EPCHS we will support, but never tolerate poor attendance and as five weeks of the school year have passed, our attendance phone calls, home visits, parental meetings and legal referrals will begin as ATTENDANCE MATTERS.

**“You can’t teach an EMPTY chair!”**

### 6<sup>th</sup> FORM INFORMATION

Newcastle Open Day, 19 November 2022



visit us before the January UCAS application deadline – so, don’t miss our final Open Day of 2022 on:

**Saturday 19 November**

**9am-4pm**

**Book NOW** - explore the Newcastle University experience with:

- specialist subject sessions
- subject stands and a student life hub
- tours of our accommodation, Sports Centre and libraries
- student-led campus tours

**World ranking latest!**

**Do you follow to keep up to date with all that is happening at EPCHS?**

**Facebook** - <https://www.facebook.com/EllesmerePortCatholicHighSchool/>

**Twitter** - @EPCH\_School



## Ellesmere Port Catholic High School

We've just been ranked 139th in the [Times Higher Education World University Rankings 2023](#) – Top 20 universities in the UK by both of these prestigious guides

### Head start to uni

Getting a 'Head start to HE' doesn't need to be tough, thanks to our on-campus event on:

**Tuesday 25 October**

**1.30pm-6pm**

View our accommodation and get the chance to join workshops geared to supporting their uni journey!

### Mini-Medical School

Our Mini-Medical School is back and delivering a series of online interactive lectures exploring the world of medical science and our latest research.

Running on **3, 10, 17, 24 November and 1 December, at 6pm**, sessions are open to anyone aged 15 and over.



## Get into Veterinary Medicine

**Conference is running this Saturday 22nd October 10am - 3pm**

The Get into Veterinary Conference is the perfect starting point for students considering a Veterinary career. Chief Vet Mentors Dr James Taylor and Dr May Yean Chua will provide insight into what it's like to

**Do you follow to keep up to date with all that is happening at EPCHS?**

**Facebook** - <https://www.facebook.com/EllesmerePortCatholicHighSchool/>

**Twitter** - @EPCH\_School



## Ellesmere Port Catholic High School

work as a Vet, and a full guide to the UCAS application process, including:

- Application Timelines
- How to Tactically Choose Veterinary Schools
- CV Building
- Personal Statements
- Interview Schools
- Medical Leadership and Awards Programmes
- Accessing Work Experience
- Accessing Scholarships to study Veterinary Medicine at university

Attendees will also hear from a Vet student to hear their best advice for making their application stand out.

The Get into Veterinary Medicine conference is a rare and free opportunity for students to speak directly to Vets and Vet students and ask any questions they have about the application process.

All attendees will be awarded a Highly Commended Reference from the Presidents of Vet Mentor to show that they have gone one step further than other Vet applicants. For safeguarding purposes, all students must be accompanied by a parent/guardian throughout the conference.

Enquiry Form: <https://airtable.com/shrM6UPT8Z2uxx70L>

Website: <https://medicmentor.co.uk/>

Medic Mentor Helpline: 01530 417299 (Open 10am - 5pm Monday - Friday)



## University of Chester

### Open Day at the University of Chester sites

Chester - Saturday 12th November

Shrewsbury - Thursday 17th November

[Book online: chester.ac.uk/openday](https://chester.ac.uk/openday)

Do you follow to keep up to date with all that is happening at EPCHS?

Facebook - <https://www.facebook.com/EllesmerePortCatholicHighSchool/>

Twitter - @EPCH\_School



## Uni Application Programme 22/23



The **deadline** for university applications is fast approaching!

**Higher Horizons+** can support your students with our Uni Applications Programme.

### Session 1 - UCAS

The aim of this session is to develop an understanding of the UCAS application process, learn the university jargon and discover what happens on results day.

### Session 2 – Personal Statements

This is a practical session taking students through what is required for a personal statement. Students will then start to write their own.

### Session 3 – How to choose a University

This session helps students with their choices of university. It asks students to think about what is important to them when choosing where to study. It will also encourage them to find open days to attend and think about what questions to ask.

**Time:** 3 x 1 hour sessions (on one day or separate days)

**Cohort:** up to 30 learners

**Target learners:** 40%

**Cost:** Free



Do you follow to keep up to date with all that is happening at EPCHS?

Facebook - <https://www.facebook.com/EllesmerePortCatholicHighSchool/>

Twitter - @EPCH\_School



**Ellesmere Port Catholic High School**

## **PRAY FOR PEACE IN UKRAINE**



**Do you follow to keep up to date with all that is happening at EPCHS?**

**Facebook - <https://www.facebook.com/EllesmerePortCatholicHighSchool/>**

**Twitter - @EPCH\_School**