

Do you follow to keep up to date with all that is happening at EPCHS?

Facebook - <https://www.facebook.com/EllesmerePortCatholicHighSchool/>

Twitter - @EPCH\_School



# Ellesmere Port Catholic High School

**Our Vision...**  
Excellent teaching.

**Our Vision...**  
Strong Catholic ethos.

**Our Vision...**  
Ensuring every child is known.

**Our Vision...**  
High expectations of everyone.



**Our Vision...**  
Excellent leadership at all levels.

**Our Vision...**  
Exemplary behaviour and personal standards.

**Our Vision...**  
At the heart of the community.

**Our Vision...**  
Keeping children safe in education.



## Headteacher Message

Dear Parents/Carers,

We look forward to our Progress Evening for Y11 on Thursday.

Thank you for your ongoing support, have a lovely weekend and take care.

Mrs. Vile

Do you follow to keep up to date with all that is happening at EPCHS?

Facebook - <https://www.facebook.com/EllesmerePortCatholicHighSchool/>

Twitter - @EPCH\_School



## Ethos, Culture and Character

**Excellent Character** – Over 10,000 Achievement points were awarded to EPCHS students since the start of term which is a fantastic total. We are incredibly proud of how you have demonstrated our values, from excellence in lessons, to supporting other students and even ensuring any litter has been cleared from the yard by caring for our environment, you are shining!

The **Heroes of the Week** are showing true character, modelling the very best behaviours we expect of our students whilst at our school. Congratulations to all those who have been chosen this week and good luck to everyone who has the opportunity each week to be nominated for their positive actions.

**As a reminder to parents, download the Arbor App so you can stay connected and up to date with your child's progress in school. For further information click the link below: <https://epchs.co.uk/arbor-information-leaflet-2/>**

**Uniform Expectations** – EPCHS students show us daily how they follow our standards and expectations and quite rightly our learners have asked what earrings are permitted. As written in our uniform policy, students are allowed to wear a single, small, stud earring in each ear. These should be small enough to fit through a 'paper hole punch' and not be hooped.

Please see the images below for a guide on appropriate studs:





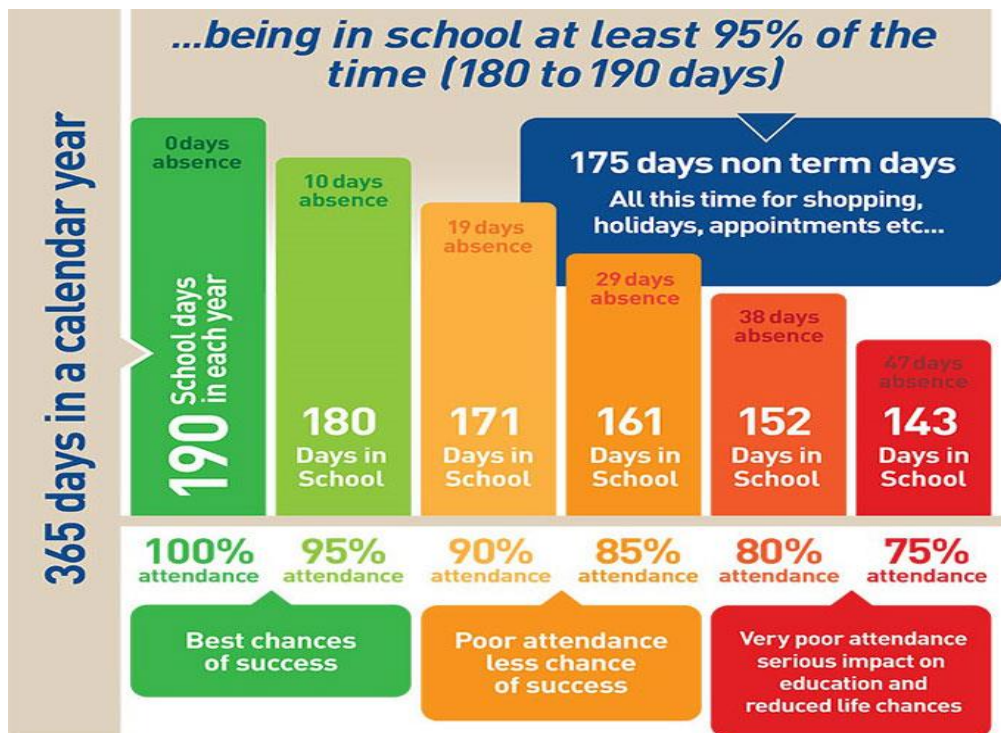
## All other piercings must not be worn to school.

All other jewellery including bracelets, necklaces, and rings must also not be brought to school. If seen these will be confiscated in the first instance and collected from your Pastoral Leader at the end of the day. Repeated failure to follow this rule will result in further behaviour sanctions being issued.

We do however encourage our students to **wear a watch** for school to ensure they are punctual to all events. Good time keeping is a key skill to develop and take into their future life.

**General Appearance** – A reminder to all students that all make-up, including fake-tan, lash extensions, false nails and painted nails are not permitted in school under any circumstances. If students are to wear these for events outside of school such as dance competitions, weddings or family celebrations they should be booked for the day the student finishes school and removed by the time they return.

**Attendance Matters** - Attendance and punctuality to school and lessons is paramount to successful outcomes. The graphic below clearly shows the impact being off school can have upon your child's progress.



Do you follow to keep up to date with all that is happening at EPCHS?

Facebook - <https://www.facebook.com/EllesmerePortCatholicHighSchool/>

Twitter - @EPCH\_School



## Ellesmere Port Catholic High School

At EPCHS we will support, but never tolerate poor attendance and as five weeks of the school year have passed, our attendance phone calls, home visits, parental meetings and legal referrals will begin as ATTENDANCE MATTERS.

**“You can’t teach an EMPTY chair!”**



### **Year 11 Progress Evening – save the date**

We would like to invite you to our Year 11 Progress Evening on **Thursday 13<sup>th</sup> October 2022 - 4:00pm to 6:00pm**

This will be a face-to-face meeting in school either with your son/daughter’s Form Teacher or a member of SLT.

There will be a formal parent’s evening later in the Year where you can meet individual class teachers. We will provide you with a full calendar of events at the Progress Evening.

You can book a slot for the Progress Evening using the Arbor App. We will send an email to let you know when this is live.

We look forward to seeing you at the meeting.

**Do you follow to keep up to date with all that is happening at EPCHS?**

Facebook - <https://www.facebook.com/EllesmerePortCatholicHighSchool/>

Twitter - @EPCH\_School



## Year 11 Places of Worship trip

A number of year 11 GCSE RE pupils visited Liverpool Metropolitan Cathedral and Princes Road Synagogue last week. We listened to an interesting talk about the history of the synagogue, had a tour of the prayer hall and viewed many artifacts used in Jewish worship and at festivals. We then walked to the Metropolitan Cathedral passing many other churches along the way, including the Greek Orthodox Church, Anglican Cathedral and St Philip Neri Church, to compare the architecture of the buildings. At the Metropolitan Cathedral, we were given a guided tour of the inside and outside of the building focusing on the features and artwork inside. One pupil said, 'both buildings were really beautiful inside and it has really helped me understand more about them and this will definitely help me with my GCSE RE.' We look forward to repeating this trip with year 10 later in the year.

The RE Department



Do you follow to keep up to date with all that is happening at EPCHS?

Facebook - <https://www.facebook.com/EllesmerePortCatholicHighSchool/>

Twitter - @EPCH\_School



**Ellesmere Port Catholic High School**

## **PRAY FOR PEACE IN UKRAINE**



Do you follow to keep up to date with all that is happening at EPCHS?

Facebook - <https://www.facebook.com/EllesmerePortCatholicHighSchool/>

Twitter - @EPCH\_School